

SECTION 14, T.6N., R.2E., S.L.B. & M.

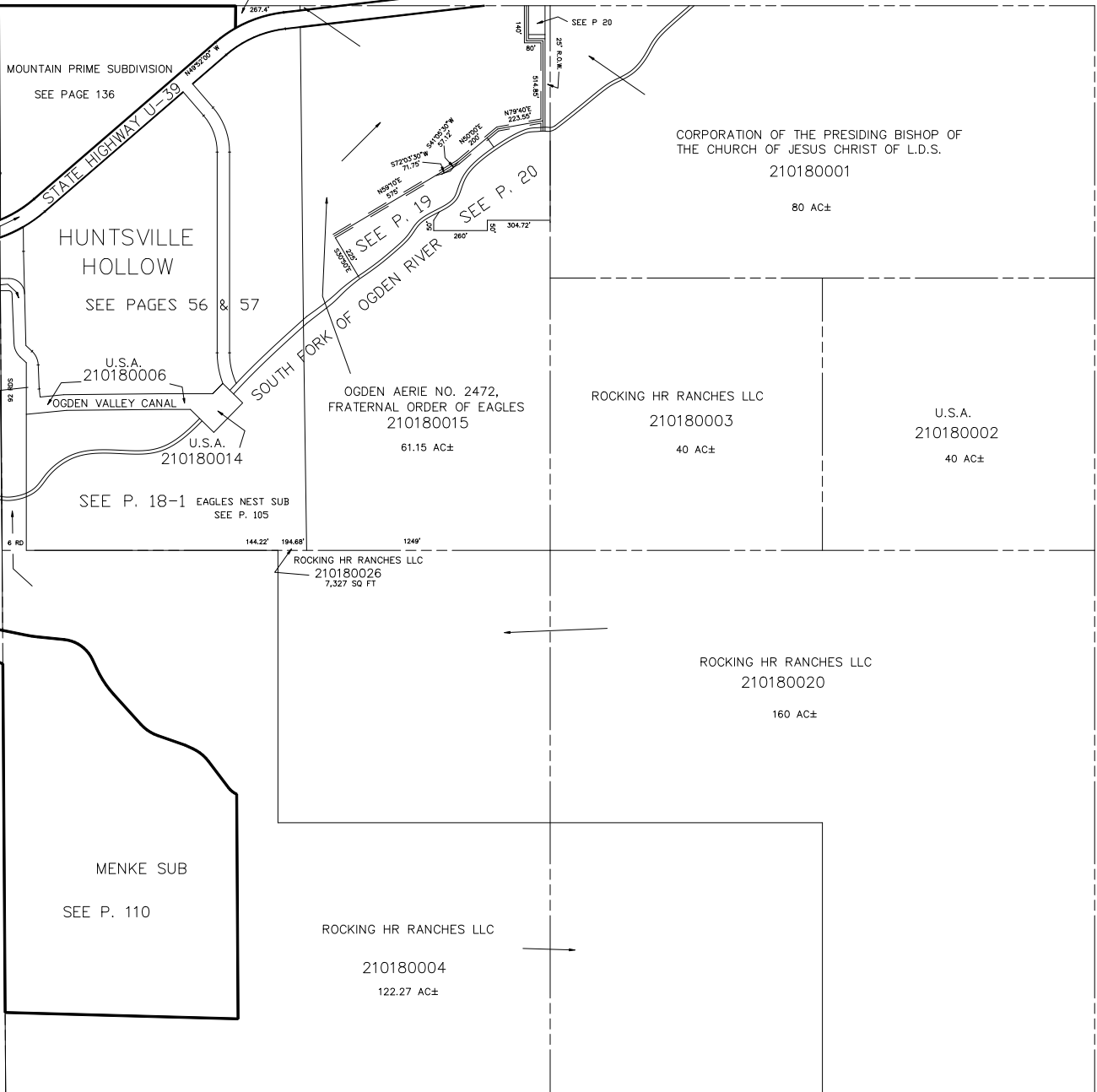
IN WEBER COUNTY

SCALE 1" = 400'

TAXING UNIT: 58

JAMES C MCKAY
210180012

SEE PAGE 13



STATE ROAD COMMISSION
210180008
210180009
210180010

WEBER COUNTY
(210180011)

MOUNTAIN PRIME SUBDIVISION
SEE PAGE 136

HUNTSVILLE HOLLOW
SEE PAGES 56 & 57

U.S.A.
210180006

OGDEN VALLEY CANAL

U.S.A.
210180014

SEE P. 18-1 EAGLES NEST SUB
SEE P. 105

OGDEN AERIE NO. 2472,
FRATERNAL ORDER OF EAGLES
210180015

61.15 AC±

ROCKING HR RANCHES LLC
210180003

40 AC±

U.S.A.
210180002
40 AC±

ROCKING HR RANCHES LLC
210180026
7,327 SQ FT

ROCKING HR RANCHES LLC
210180020
160 AC±

MENKE SUB

SEE P. 110

ROCKING HR RANCHES LLC

210180004
122.27 AC±

SEE PAGE 36

SEE PAGE 21

SEE PAGE 21

SEE PAGE 17